

WANT TO MAKE POLYSTYRENE SIGNS?

READ ON...IT'S HOT!

When creating signs, logos and displays, materials like textiles, wood, acrylic and foamex, corrugated plastic and aluminium composite are typically used.

Add in 3D printing, and there are now more ways than ever for making bold and creative displays.

However, the use of inexpensive expanded polystyrene (EPS) as a viable material in the sign and logo making world has often been overlooked. This is primarily due to the limited options for cutting the material....until now!



Most graphic companies utilize equipment such as Milling Machines, Routers and Knife Cutters. With polystyrene it is no different, requiring its own specialized piece of cutting equipment.

What is the solution? **The Hot Wire Cutter.**

Read on to find out more, and to understand which system is best for your business.



The Hot Wire Cutter Explained

A Hot Wire Cutter uses a thin and evenly heated wire starting from 0.15mm in diameter to cut through EPS polystyrene. Simple shapes such as squares; as well as more complex parts such as logos and letters are cut effortlessly, as it sears its way through the material.

For best results a Titanium wire is used, due to its high heat threshold and resistance to stretching.

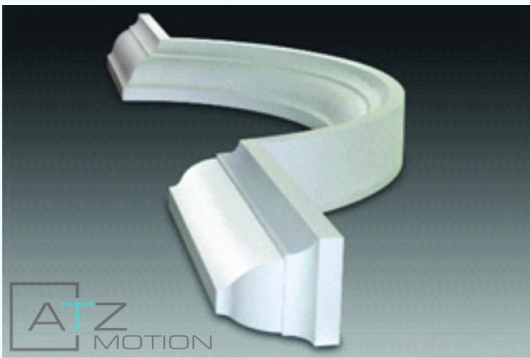
Unlike knife cutting or routing, the hot

The Hot wire system is an easy to operate CNC (Computer Numerical Control) controlled machine.

Designed to traverse lengthways along the length of the machine, as well as moving the hot wire up and down vertically, having 2 axes of movement; letters, logos and the profile of any shape can be cut.

Designs created in software packages such as Rhino, Autocad and Illustrator, can be sent to the machine for

wire creates no dust, with the finished edge being smooth and clean.



cutting. The machine is calibrated to accurately cut to scale the job it has been sent. The Hot Wire Cutter is able to import standard file formats such as DXF and AI.

The system comes with its own easy to use software called iXShaper, which operates the cutting machine.

The Hot Wire Cutter is used for cutting Letters, Logos, Cornices, Balusters, Decorations and Decorative Fascias. Among the many uses, polystyrene packaging can also be created to transport the products safely.

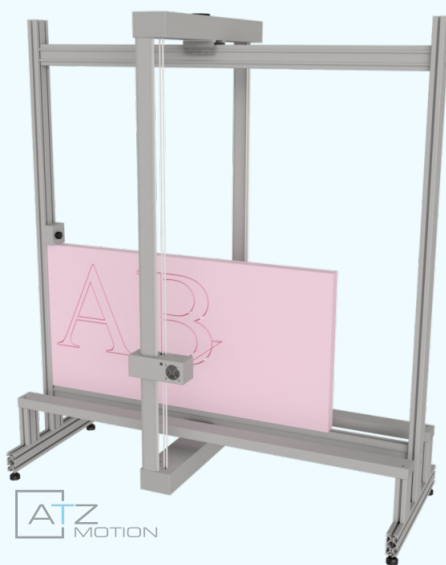
It's really up to the imagination as to what can be created!



Which Hot Wire Cutter is best for your business?

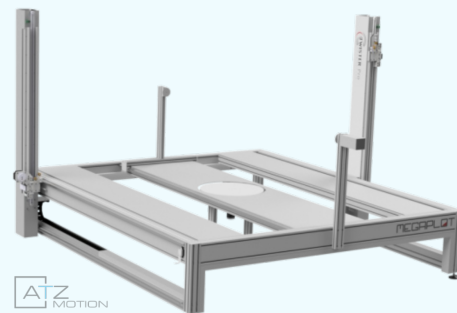
There are two solutions depending on the type of product being made and the thickness of polystyrene being cut.

1 - P60 Hot Wire Cutter (Small Format)



The P60 Hot Wire Cutter is an affordable foam cutting system and is ideal for cutting letters and logos. This system is a 2-axis machine designed to cut polystyrene up to a maximum of 600mm in width, 3050mm in length and

2 - TWISTER PRO Hot Wire Cutter (Large Format)



The TWISTER PRO "PLUS" model is also used for cutting letters, logos and decorative products. This model has more options in terms of size if needing to cut wider materials.

The system is available in incremental sizes up to a maximum cut width and length of 4000mm and cut height of 1280mm. The system has automated turntable and lathe features to enable it to make 3D parts such as stands and balusters. Pricing is extremely competitive for a system capable of

1220mm in height.

The system is compact and has the benefit of a small footprint so it does not take up large amounts of valuable floor space.

The system has an optional Lathe feature which rotates the material horizontally and is used for making pillars and stands.

There is an additional Shape Wire Bar which allows the user to manually bend the wire to a chosen shape for cutting. The Shape Wire Bar is used in conjunction with the Lathe.

producing both complex and large EPS products.

The TWISTER PRO “PLUS” has the additional feature of **Independent Axis Control**. This enables the wire on either side of the machine to move independently of each other, making it possible to create 3D tapered shapes.

The TWISTER PRO “STANDARD” is available for applications which require the larger cut area, but the Independent Axis Control, Turntable and Lathe features are not available on this model.

For peace of mind the P60 and Twister models come with an amazing **5 Year Warranty!**



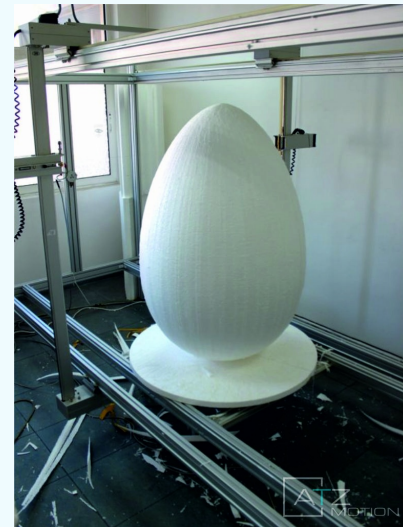
What are the benefits of using polystyrene?

There are several key benefits to using polystyrene with the first being price. The material is among the most inexpensive substrates that can be used to make signs and is sold in multi-sheet packs or blocks.

As companies strive towards producing greener products, EPS polystyrene has a significant benefit in that it is 100% recyclable due to 98% of the structure being air with 2% being plastic. Unlike a lot of materials that potentially end up in landfill, EPS polystyrene can be broken down and re-used to make other plastic products.

Polystyrene is an extremely lightweight and strong material making it easy to handle and manoeuvre. As it does not absorb water it is suitable for both indoor and outdoor use. Large logos displayed at exhibition stands can often be made from polystyrene, being light and easy to handle, especially when being constructed at height.

EPS sheets are available in various widths with the simplicity of using the thickness of the sheet to create bold 3D displays. The logos can be painted or have additional decorative features bonded to them to create stunning and eye-catching products.





To Summarise

There are many benefits of using EPS polystyrene such as being cost-effective, light weight and recyclable. Put into the equation a hot wire cutter, and the portfolio of unique and creative products that can be produced is endless. Without a huge financial outlay, companies can produce a wide range of products, and have more options for creating stunning Branding, Displays, Signs and Logos.



ATZ-Motion are the UK and Ireland Suppliers of the Hot Wire Cutters and guarantee high quality installation, maintenance and warranty support for your system.

For more information and pricing, please feel free to call or mail:

John Ichikawa (Sales Manager)

Mobile: +44 7908 175 191

Mail: john@atz-motion.co.uk

Website: <https://www.atz-motion.co.uk/>

About AT Z-Motion

Based in Colchester, Essex, we are experts in the field of CNC technology and supply Routers, Laser Cutters, Pallet Assembly Tables and Hot Wire Cutters. As engineers we also offer servicing, maintenance and machine relocation services.

[Unsubscribe office@atz-motion.co.uk](#)

[Update Profile](#) | [Constant Contact Data Notice](#)

Sent by office@atz-motion.co.uk powered by



Try email marketing for free today!